

STREET  
LIGHTING

# ARQUICITY S1

ROAD  
HM

Illuminate rural and urban areas, streets, parks, squares, residential and pedestrian areas.

The luminaire **ARQUICITY S1** assumes an important role in the city's identity.

In order to provide an energy efficient solution and in a clear commitment to quality, **ARQUICITY S1** was developed based on a careful selection of materials, ensuring its performance and a long lifetime of all components.

The **ARQUICITY S1** is available in various power and photometries, adjusting to the specificities of each project, allowing to reduce the energy consumption and energy invoice.

## PERFORMANCE

With a high quality polycarbonate polymer body and resistance to UV radiation and ignition, it also has an aluminum heatsink that allows excellent heat dissipation, maximizing the equipment's lifetime.

This luminaire has also an integrated thermal protection for overheating protection of its components.

## SUSTAINABILITY

The excellent combination of quality vs money and its significant reduction of energy costs, plus its reduced maintenance costs, make **ARQUICITY S1** the right choice for those looking for a high performance and financially sustainable solution, with a fast return on investment.

## APPLICATION

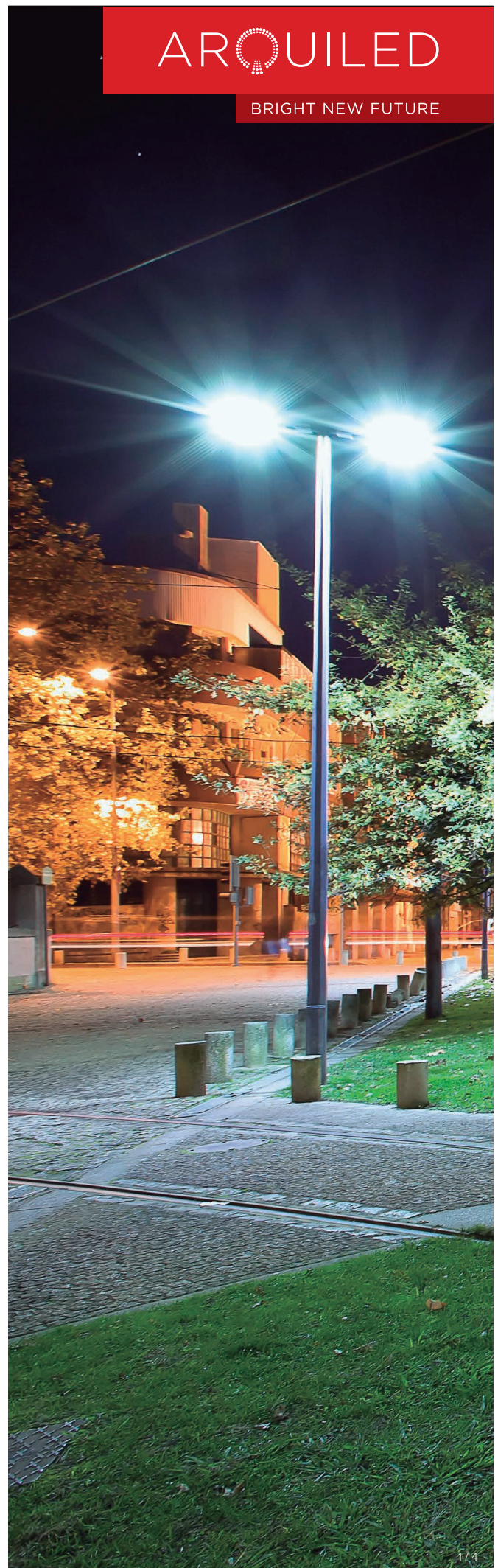
- Rural and urban areas
- Pedestrian areas, parks and squares
- Parking lots and outdoor areas

## BENEFITS

- Costs reduction
- Rural and urban areas enhancement
- Revitalizes the areas in the night period
- Increased public safety and crime prevention
- Improved perception and guidance on any type of road

# ARQUILED

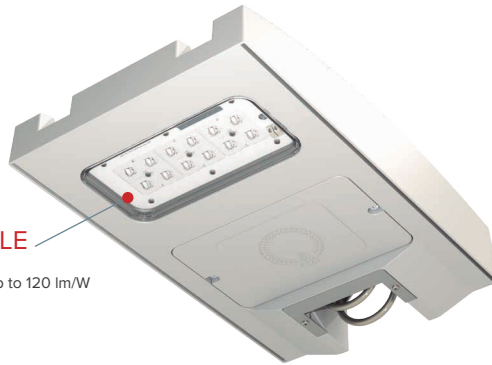
BRIGHT NEW FUTURE



# ARQUICITY S1

## PERFORMANCE

High quality polycarbonate polymer  
UV protection



## OPTICAL MODULE

Last generation LED  
High luminous efficiency: up to 120 lm/W

up to  
**120 lm/W**  
luminous efficiency

up to  
**80%**  
energy efficiency

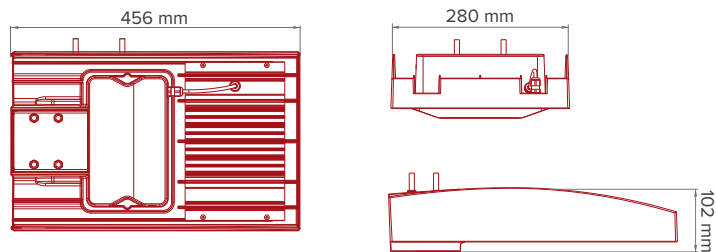
IP66

IK08

ta  
40 °C

CLASS  
II

## DIMENSIONS



## MODELS

<b>Models</b>	ARQUICITY S1: 10   20   30   40
<b>Power Consumption<sup>(1)</sup></b>	7 - 42 W (depending on configuration)
<b>Luminous Flux<sup>(1)</sup></b>	1.459 - 4.539 lm
<b>Luminous Efficiency</b>	Up to 120 lm/W

## SPECIFICATIONS

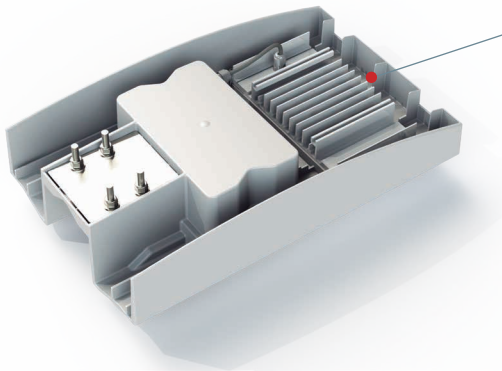
<b>Housing</b>	Polycarbonate polymer and stainless steel
<b>Optical module</b>	Diffuser: High impact PMMA Sink: Aluminium
<b>Product finishing</b>	Polyester painting
<b>Product color</b>	RAL 7035
<b>Correlated Color Temperature (CCT)</b>	3.000 K / 4.000 K*
<b>Lumen maintenance at 100 000h</b>	> 90% <sup>(2)</sup>
<b>Color Rendering Index (CRI)</b>	≥ 70
<b>Ingress protection (IEC – EN 60598)</b>	IP66
<b>Mechanical impacts protection (IEC – EN 62262)</b>	IK08
<b>Nominal voltage</b>	100 - 240 V / 50 - 60 Hz
<b>Surge overvoltage protection (EN 61000-4-5)</b>	4 kV / 10 kV
<b>Electrical class</b>	Class II
<b>Mounting</b>	Horizontal (standard) Vertical (optional)
<b>Inside mounting diameter</b>	ø 42 - 60 mm
<b>Angle correction (optional)</b>	+5°, -5°, -10°, -15°, -20°

<sup>(1)</sup> The initial flux and power consumption of the luminaire are indicative values and valid for @tj=25°C. The real flux output of the luminaire depends on specific conditions, such as temperature and may vary with specific configurations. The values are subject to tolerances in technology.

<sup>(2)</sup> In accordance with IES LM-80 - TM-21

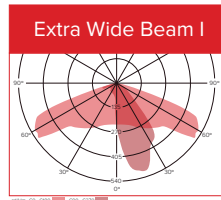
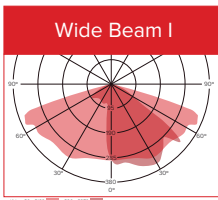
\* Other options available on request.

# ARQUICITY S1



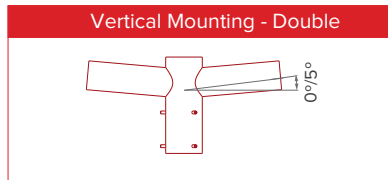
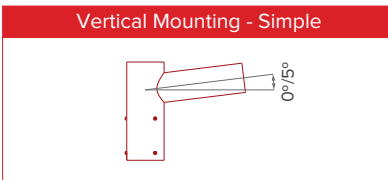
**SINK**  
Aluminum sink  
Excellent heat dissipation

## PHOTOMETRIC DATA



Note: Other options available on request.

## ACCESSORIES



## ECCOS

**ECCOS single**

Luminaire's integrated single control system that allows to define savings profiles according to predefined time intervals and luminous flux levels.

**ECCOS street**

Luminaire's integrated control system that commands the luminous flux through a micro-cut system.

Cofinanciado por:



UNIÃO EUROPEIA  
Fundo Europeu  
de Desenvolvimento Regional



2020, ARQUILED, PROJECTOS DE ILUMINAÇÃO, SA.  
All rights reserved. All trademarks are acknowledged.  
ECCOS brand is a trademark used under licence of Bright Science Ltd.  
The images presented are for illustrative purposes and may differ from the final product.



ARQUICITY S1  
[www.arquiled.com](http://www.arquiled.com)